

SPRING  
2014

VOL. XII, ISSUE II

[www.jltulsa.org](http://www.jltulsa.org)

# gusher

THE MAGAZINE OF THE JUNIOR LEAGUE OF TULSA

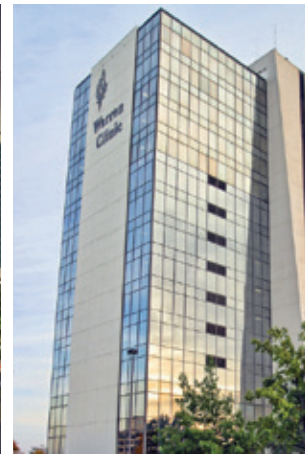
a LEAGUE  
*of their* OWN

CELEBRATING THE HISTORY  
*of the* JUNIOR LEAGUE

*& Out*  
**ABOUT**

meet  
*the incoming*  
**BOARD**





## Locally owned. Locally operated. Regionally focused.

From the day Saint Francis Hospital opened in 1960, we have been committed to one mission: to extend the presence and healing ministry of Christ in all we do. His caring is the model for how we serve patients, families and each other.

The physicians, nurses, employees and volunteers of Saint Francis Hospital, The Children's Hospital at Saint Francis, Warren Clinic, Heart Hospital at Saint Francis, Saint Francis Hospital South, Laureate Psychiatric Clinic and Hospital, Saint Francis Broken Arrow and Saint Francis Home Health and Hospice are without equal in Tulsa and northeastern Oklahoma.

[saintfrancis.com](http://saintfrancis.com)

Saint Francis Health System | 918-494-2200



# EDITOR'S LETTER

Dear Readers,

Happy spring season from *gusher*!

Out with the cold, in with the warmth, am I right? I am looking forward this season to celebrating sunshine, flowers in bloom, quality patio time, and the end to yet another fabulous year in JLT.

Spring also signifies the return of baseball season, and this issue's theme is aptly titled "A League of Their Own," which just happens to be my all-time favorite film. Why do I love this movie so much? Besides my love for Tom Hanks (can you blame a gal?), this movie tells the true story of the first professional baseball league for women, created during a time of war and a time where women were only viewed as supporting players in the shadow of men. These women, from all walks of life, pioneered the way for other women to pursue dreams in areas that were once viewed impossible and subsequently inspired generations of women to never say never.

The Association of Junior Leagues International (AJLI) has also been a pioneer, paving the way for women across the globe to place voluntarism as a priority to themselves and to their communities. More specifically, the Junior League of Tulsa has made a mark on the Tulsa community as a leader in voluntarism for the past 91 years, producing and cultivating women leaders who strive to make Tulsa a better place each and every day. This issue's feature stories include the rich histories of both AJLI and JLT shown in a timeline format and our 2012-2013 Annual Report. Like the women in "A League of Their Own," we in JLT have a sincere passion for our organization and what we do. It is a passion that is contagious, and it is a passion that we hope to pass on to generations down the road.

May you be as proud to be a part of AJLI/JLT as I am.

*JLT Love,*

Jennifer Wyckoff

*gusher* CHAIR, 2013-2014



courtesy of Leslie Hoyt | [www.lesliehoyt.com](http://www.lesliehoyt.com)

*"These women, from all walks of life, pioneered the way for other women to pursue dreams in areas that were once viewed impossible..."*

## 2013-2014 GUSHER COMMITTEE

Jennifer Wyckoff, Chair

Laura Swan, Vice-Chair

Amanda Alvarez

Ann Boyd

Kara Fleege

Lucia O'Connor, Sustaining Advisor

*gusher* is a quarterly publication of The Junior League of Tulsa, Inc., 3633 South Yale Ave., Tulsa, OK 74135; devoted to informing the membership and the community of current League projects, events and issues. For more information on advertising, please visit [www.jltulsa.org](http://www.jltulsa.org) and click on *gusher* or e-mail [gusher@jltulsa.org](mailto:gusher@jltulsa.org).

# WHAT'S INSIDE

# spring 2014

## features

- 7 *gusher's* Best of Tulsa
- 8 Spring Gala Thank Yous
- 9 Annual Report
- 13 ALJI / JLT Timeline
- 14 Meet the Incoming Board
- 18 Out and About

## departments

- 3 from the President *Liz Brolick*
- 4 Save the Date
- 5 Transitions
- 6 The 10-4
- 15 CAB Profiles
- 17 Sustainer Update
- 21 ReMember Form



## On the cover

From left to right: Rita Burke, Nicole Randolph, Whitney Mathews, Liz Brolick, Carissa Cooper, and MaryBeth Nesser

Photo courtesy of Leslie Hoyt  
[www.lesliehoyt.com](http://www.lesliehoyt.com)

## FROM THE PRESIDENT

When I learned the theme for this issue of the *gusher*, I knew it would be a great issue. The movie has always been a classic and one of my favorites and I can see some parallels from the movie to these last few months. I love that this issue will highlight AJLI, our international organization that provides us with support, guidance and training. I have had the pleasure to attend many AJLI training opportunities from the free Webinar Wednesday series to the Organizational Development Institutes to Annual Conference.

The Junior League of Tulsa would not be successful without the continued support of the Tulsa community and its non-profit world. Thanks to everyone who has been and continues to be a cheerleader for the League. We exist to make Tulsa the best place it can be for those who live here today and for future generations.

This amazing partnership between the League and the community at large has never been more evident than through the programs and events we hosted these last several months. After this winter I know we are all ready for spring and summer! League members really stepped up and faced the storms (literally) head on and JLT came out on top!

*Jimmy Dugan to Evelyn Gardner: Are you crying? Are you crying? ARE YOU CRYING? There's no crying! THERE'S NO CRYING IN BASEBALL!*

Will ice storms during Holiday Market slow us down? NO WAY! There's no crying in fundraising! The committee came together in true League fashion and secured extra news coverage and created a social media blitz to encourage attendance and sales for our vendors.

*Jimmy Dugan to Dottie Henson: It's supposed to be hard. If it wasn't hard, everyone would do it. The hard... is what makes it great.*

Does hosting Mentorship Luncheon the day before another large event give cause for concern for support? NO WAY! One look at the invite and program the Mentorship Luncheon Committee put together, and tickets sold like hotcakes. Paula Marshall inspired us all to go out and be better mentors...and find our purpose.

*Older Stilwell to Older Dottie: Yeah. When I heard about this, I... I felt I owed it to her to be here. She always said it was the best time she ever had in her entire life.*

What is that you said...dinner tickets are going to sell out before invitations are printed for Spring Gala? But wait, we are honoring one of our amazing long time members, so what happens next? Once again, committee members jumped on the innovation train and created new sponsorship opportunities for the after party and nearly sold that event out as well.

The Junior League of Tulsa continues to be an innovative leader in Tulsa's nonprofit community. As President, I have been able to witness the power of League volunteers and how they each make a specific yet cumulative impact in our community. The force of The Junior League of Tulsa's membership radiates through our community.

This journey truly has been one of the best times I have had in my life. I hope you feel the same...

LIZ BROLICK – 2013-2014 President  
*Junior League of Tulsa*



courtesy of Leslie Hoyt | [www.lesliehoyt.com](http://www.lesliehoyt.com)

# WOMEN BUILDING T *a better* TULSA

---

**our mission**

**THE JUNIOR LEAGUE OF TULSA, INC.**, is an organization of women committed to promoting voluntarism, developing the potential of women and improving communities through the effective action and leadership of trained volunteers. Its purpose is exclusively educational and charitable. Junior League of Tulsa reaches out to women of all races, religions, & national origins who demonstrate an interest in and commitment to voluntarism.

## CORE VALUES

**Community:** It is the heart of all we do

**Diversity:** The synergy of different perspectives

**Voluntarism:** An essential component of our society

**Mentoring:** Essential growth for future generations

**Leadership:** The development of individual potential

**Respect:** For our members' time, energy and skills

**Collaboration:** Forming partnerships and strategic alliances

**Well-being:** Physical, mental, emotional and social

## SAVE THE DATE

**May 14 – Annual Meeting  
at Stokely Event Center**

**May 28 – Libations with Liz**

**June 13-14 – Leadership Retreat**

---

For more information about the Association of Junior Leagues International Inc. or to find out more about how Junior Leagues build better communities, please contact:

**The Association of Junior Leagues International Inc.**

80 Maiden Lane, Suite 305

New York, NY 10038

Tel: 212.951.8300 • Fax: 212.481.7196

E-mail: [info@ajli.org](mailto:info@ajli.org)

[www.ajli.org](http://www.ajli.org)

## 2013-2014 BOARD OF DIRECTORS

---

Liz Brolick, *President*

Alison Wade, *President-Elect*

Rita Burke, *Treasurer*

Nicole Randolph, *Treasurer-Elect*

Kristal Sack, *Recording Secretary*

Sarah Rehm, *Corresponding Secretary*

Cyndi Nixon-Kernan, *Community Program VP*

Carissa Cooper, *Communications Council VP*

Stephanie Eckman, *Financial Council VP*

Whitney Mathews, *Membership Council VP*

Mary Beth Nesser, *Nominating Chair*

Susan Kenny, *Strategic Planning Chair*

Shelly Drullinger, *Sustaining Advisor*

## 2013-2014 COMMUNITY ADVISORY BOARD

---

Victoria Bartlett, *City of Tulsa Appointee*

Eileen Bradshaw, *Eastern Oklahoma Community  
Food Bank*

Ken Busby, *Arts and Humanities Council*

Mary Quinn Cooper, *McAfee Taft*

Jill Donovan, *Rustic Cuff*

Meredith Fazell, *McAfee Taft*

Shane Fernandez, *Crafton Tull*

Lucky Lamons, *Tulsa Public Schools Foundation*

Karen Larsen, *KJRH*

Betty Lehman, *B'Nai Emunah*

Andy Levinson, *IBC Bank*

Tina Parkhill, *Parkhill's South*

# transitions

## JUNIOR LEAGUE FAMILY NEWS



Jennifer Andrade (A) welcomed Lucy Elizabeth Koch on July 29, 2013.



Sarah Garrow (A) welcomed McKinley Grace Garrow on July 27, 2013.



Meredith (A) Lindaman welcomed Avaleigh Elizabeth Lindaman on May 21, 2013.



Jessica Newell (A) welcomed Sawyer Eileen Newell on February 20, 2014.



Chris Oden (A) welcomed Olivia Madeleine Oden on December 17, 2013.



Ashley Schubert (A) welcomed Henry Brennan Schubert on January 7, 2014.

## CONDOLENCES

Jeanetta Foster (S): 1/18/14

Lynn Martin (S): 2/28/14

Katherine Haskell's (A) mother

The Junior League of Tulsa (JLT) family wants to know what is happening in your life. Please take a moment to let us know about your important events, including:

- Birth Announcements
- Engagement or Wedding Announcements
- Condolences
- Special Community or Workplace Recognition
- Career Changes

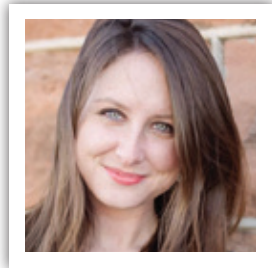
Please email information to the gusher at [gusher@jltulsa.org](mailto:gusher@jltulsa.org)

# the 10-4

Welcome to "The 10-4," where four different members (Provisional, Active, Sustainer, and Board Member) of the Junior League of Tulsa are asked the same 10 questions regarding JLT and life in Tulsa. See what they have to say!

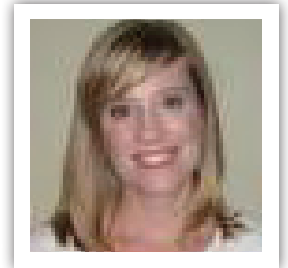
## **Provisional: Katie Selvidge**

*How long have you been in Tulsa?*  
3 years  
*Where is your go-to place to shop?*  
Cherry Street Farmer's Market  
*What has been your favorite committee in JLT?* Mentorship Luncheon  
*Three words to describe yourself?*  
Earnest, meticulous, and ambitious  
*What is the most exciting place you've ever traveled?* Growing up in Hawaii was pretty magical  
*What other volunteer work have you done?* As a ballerina in Houston, I loved sharing hugs and my tiara at MD Anderson's Children's Center  
*What is your favorite restaurant in Tulsa?* Boston Deli  
*One word to describe Tulsa?* Vibrant  
*What is the one item you can't leave home without?* A notebook and pen  
*Who's your celebrity crush?* I have three. Michelle Dockery, Sofia Coppola and Hugh Jackman



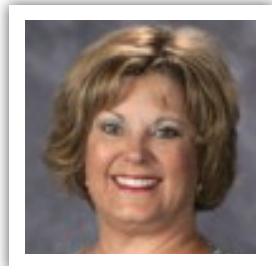
## **Active: Gina Smith**

*How long have you been in Tulsa?*  
10 years  
*Where is your go-to place to shop?*  
Brookside  
*What has been your favorite committee in JLT?* American Girl  
*Three words to describe yourself?*  
Compassionate, stubborn, and hard working  
*What is the most exciting place you've ever traveled?* Riviera Maya  
*What other volunteer work have you done?* I was a volunteer cheer coach for five years for Owasso  
*What is your favorite restaurant in Tulsa?* Prhyme  
*One word to describe Tulsa?* Vibrant  
*What is the one item you can't leave home without?* Mascara  
*Who's your celebrity crush?* Channing Tatum



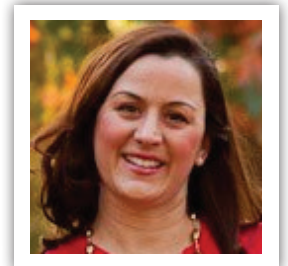
## **Sustainer: Leslie Frazier**

*How long have you been in Tulsa?*  
All of my life. I moved to Broken Arrow in 1991, but I still consider myself a Tulsan  
*Where is your go-to place to shop?*  
Utica Square, but Macy's is one of my favorites as well  
*What has been your favorite committee in JLT?* BloomingDeals, Community Connections, and chairing Provisional Committee  
*Three words to describe yourself?* Loyal, conscientious, and optimistic  
*What is the most exciting place you've ever traveled?* Alaska  
*What other volunteer work have you done?* National Association of Secondary School Principals, Chi Omega Alumnae Board, Child Abuse Network, American Lung Association, Tulsa Zoo, American Cancer Society  
*What is your favorite restaurant in Tulsa?* Fleming's  
*One word to describe Tulsa?* Special  
*What is the one item you can't leave home without?* Cell phone  
*Who's your celebrity crush?* I don't really have one



## **Board Member: Kristal Sack (Recording Secretary)**

*How long have you been in Tulsa?*  
I grew up in Owasso but have officially lived in Tulsa for 10 years.  
*Where is your go-to place to shop?*  
Gap, Ann Taylor Loft, pretty much anything in Utica Square!  
*What has been your favorite committee in JLT?* Serving as Provisional Chair  
*Three words to describe yourself?* Determined, feisty, and outgoing  
*What is the most exciting place you've ever traveled?* Mo'orea Island in the French Polynesian Islands  
*What other volunteer work have you done?* I love volunteering with my boys' activities!  
*What is your favorite restaurant in Tulsa?* Anything seafood and sushi  
*One word to describe Tulsa?* Home  
*What is the one item you can't leave home without?* Oliver and Trevor  
*Who's your celebrity crush?* Vince Vaughn

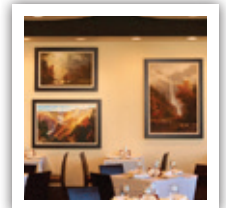




# the BEST of TULSA

Each issue your friendly *gusher* Committee will give you their top picks for living life in Tulsa. From food, to cocktails, to hotspot locations, these ladies have the scoop on where to go and where to be in the Oil Capital of the World.

**RESTAURANT:** More than a museum destination, the Gilcrease is home to a restaurant that offers a contemporary and upscale environment. One can enjoy a midday meal which boasts an impressive view of the Osage Hills. Better yet is the must-see menu of fine dining with a Southwest influence. Don't miss their Sunday Brunch! – **Ann Boyd**



**COFFEE:** If you're ever in the Brookside area and are looking for a great cup of coffee, Italian soda, or even a glass bottle of soda, check out Shades of Brown on Peoria. They have a great atmosphere, and the staff is amazing. – **Kara Fleege**



**RESTAURANT:** Keo. I can't say enough about this Brookside staple. I love the ambiance, the fresh ingredients, and the abundance of gluten free options. Dishes I recommend trying: pad thai with chicken and the Vietnamese crepe. – **Laura Swan**



**FITNESS:** At CrossFit Vital, not only are you able to get a great workout done in just an hour, you are also meeting wonderful people. The encouragement and support you have with this group of people is second-to-none, and I would recommend it to anyone, new or experienced. CrossFit Vital is for everyone! – **Amanda Alvarez**



**COCKTAIL:** The spring season requires refreshing cocktails, and there's none better than the "Tin Man" at Rusty Crane, located in the Brady District. Served in a mason jar with a fresh slice of cucumber, you will not be sorry you ordered this drink. By far one of my favorite cocktails in the entire city! – **Jennifer Wyckoff**



**PINOT'S PALETTE**  
PAINT. DRINK. HAVE FUN.  
Girls Night Out • Date Night • Private Parties • Birthdays  
Use code \*JLPAINT\* at checkout for 10% off.  
[www.PinotsPalette.com/CherryStreet](http://www.PinotsPalette.com/CherryStreet)

The fastest, most effective way to **change your body.**

**pure barre**  
lift • tone • burn

**First class free!**

918-494-4977 | 8921 S. Yale Ave. Suite C | Tulsa, OK 74137

# Thank You FOR YOUR SUPPORT

## THANK YOU TO OUR 2014 SPRING GALA SPONSORS/DONORS!

### *Diamond*

Phyllis & George Dotson

### *Sapphire*

Sandy & Steve Crahan  
Helmerich & Payne, Inc.  
JD Young  
Christy & John Lindsay

### *Ruby*

Boardwalk Distribution  
Central National Bank  
Patricia L. Deisenroth  
Einstein Bros Bagels  
GableGotwals  
Glazers Oklahoma  
Jarboe Sales Company  
Jenny & David Lamb  
Luxe Furniture & Design  
Schneider Electric  
Sheryl & Steve Simonton  
Williams  
The Wilson Family  
WPX Energy, Inc.

### *Opal*

Phyllis & Steve Anderson  
The Hamlet  
HoganTaylor LLP  
Magellan Midstream Partners, LP  
Nancy & Peter Meinig  
Mid-Con Energy Partners, LP  
Jean & David Millwee  
Mint Dental  
Mindy & Jesse Pearson  
Linda & Robert Zamorano

### *Topaz*

Aaron Lee Allstate Agency  
Nikki & John Bell  
Citizens Security Bank  
The Fulton and Susie Collins  
Foundation  
Sarah & Paul Dougherty  
Marjory & John Gaberino  
Mrs. Walt Helmerich  
Burt B. Holmes  
Irby Electrical Distributor  
Pebble & John Moss  
The Mayo Hotel  
Tanya & Carlos Romero  
Saks Fifth Avenue

### *Pearl*

Andolini's Pizzeria  
Victoria & Dewey Bartlett  
Billie & Howard Barnett  
Ashleigh & Dan Boedeker  
Liz & Peter Brolick  
Rita & Taylor Burke  
Carissa & Brad Cooper  
Heather & Jason Duncan  
Stephanie & Russell Eckman  
Joy & Matthew Francis  
Kelli & Mark Gebbia  
Gobbo Real Estate with Keller  
Williams  
Helen Jo & James Hardwick  
Katherine & Henry Haskell  
Susie & Bob Jackson  
Elba & James Kufdakis  
Jenny & Marvin Lizama  
Jennifer Miller

Danielle Porter  
Ranchers Pipe & Steel  
Janna & Steve Roberson  
Erica Slone  
Deborah & Stuart Spencer  
Shelby Stauffer  
Farryl Stokes  
Stotts Barclay Pettus Whipple  
Littleton & Ruef, P.C.  
Betty & Kelly Swindle  
Jean N. Tate  
The University of Tulsa  
Upside Interiors  
Alison & Eric Wade  
Meg & Gary Watkins  
BJ & Jason Weintraub  
Leslie & Tim Yardy

### *Friends of the League*

Jane Barrett  
Carolyn & Jack Blair  
Sally & Gene Campbell  
Sue & Brent Curry  
Ruthie & Steve Duenner  
Shirley & Charles Hawkins  
Erma Henson  
Carlynnne Holmes  
Carol & Jim Leach  
Dr. & Mrs. B.J. Maguire  
Dr. & Mrs. J. Frederick McNeer  
Karen Mildren  
Elizabeth & Paul Poyner  
Susan & Bill Schloss  
Anna & Andrew Smith  
Margaret & Ross Swimmer  
Nancy & Andy Wolov

### *Live Auction Donors*

Antique Warehouse, Bob  
Hurley Auto Family, Cedar  
Ridge Country Club, The Club  
at Indian Springs, The Colonial  
Building, Erin Fultz with  
Campbell Design Associates,  
TJ Garis of Morgen Garis  
Gallery, Sarah and Shane  
Garrow, In the Raw, Cyndi and  
Mike Kernan, David Kindred,  
Mahogany Prime Steakhouse,  
Mi Cocina, Oklahoma City  
Thunder, The Party Darling-  
Stephanie Eckman, The Polo  
Grill, Posh Blow Dry Bar,  
QuikTrip Corporation, Red  
Door Multimedia Group, Serta  
Mattress Company-Dixi and  
Burt Palu, Southwest Airlines,  
Molly and Bill Spearman,  
Brooke and David Sturdivant,  
Toni's Flowers & Gifts, Tulsa  
Country Club, Haley Van  
Demark, VIP Limo, The Wilson  
FamilySavoy, SeekingSitters,  
Sky Fitness Zone, Amber  
Sousa-Lash Bloom, Suite One,  
The Sweet Tooth, Summer  
Snow Gifts & Décor, T.A.  
Lorton, Tapestry of Faith,  
Tarynn Pur Esthetics, Tavolo,  
Tulsa Children's Museum,  
Tulsa Fitness Systems, Tulsa  
World of Gymnastics, Tulsa  
Zoo, University of Oklahoma,  
University of Tulsa, Utopia  
Boutique, Walmart, The Westin  
Galleria Dallas, BJ and Jason  
Weintraub, Zoes

### *Luxury Raffle Donors*

Abertsons, Academy, All Star Sports Complex, Aloft Tulsa Downtown, America's Incredible Pizza Company, Amy Herndon Photography, Andolini's Pizzeria, Ascent, Bank of Oklahoma, Mayor Dewey F. Bartlett Jr., The Beauty Shop, The Bistro at Seville, Black Optical, The Bleu Door, Bounce U, Broken Arrow Medical Spa, Brook Restaurant and Bar, Brookside by Day, The Canebrake Resort and Spa, Coco Blow, Katie and Lee Cornwell, Dick's Sporting Goods, The Elephant Trunk, Elote, Emily Davis Interiors, Fifteenth and Home, Fleet Feet, Joy Francis, Full Moon Café, G.K. Griffon, Erin Hall-Locks Salon, Dr. and Mrs. Higgins, Hilti Inc., Ida Red, Ihloff Salon and Day Spa, In the Raw, The Inviting Place, J. Hilburn Men's Clothier, Jara Herron Medical Spa and Salon, Jay's Hoagies, Juniper, Justin Thompson Restaurants, Kathleen's Kids, Dr. Marti Levinson, The Lolly Garden, Lululemon, The Mayo Hotel, McManis Family Vineyards, McNellie's Group-The Tavern, Mi Cocina, Miller Swim School, Jean and David Millwee, Miss Jackson's, My Fit Foods, Oak Tree Photography, Oklahoma Aquarium, Oklahoma State University, Old School Bagel Café, On a Whim, Parkhill's Liquors & Wine South, The Perfect Touch, The Pioneer Woman-Ree Drummond, Prhyme Steakhouse, Pure Barre, QuikTrip Corporation, Reasor's, Ribbon's on Peoria, Runners World, Rustic Cuff, S.P. Crahan & Daughters, Sasha Malchi Home, The Sarah Image Photography, Savoy, SeekingSitters, Sky Fitness Zone, Amber Sousa-Lash Bloom, Suite One, The Sweet Tooth, Summer Snow Gifts & Décor, T.A. Lorton, Tapestry of Faith, Tarynn Pur Esthetics, Tavolo, Tulsa Children's Museum, Tulsa Fitness Systems, Tulsa World of Gymnastics, Tulsa Zoo, University of Oklahoma, University of Tulsa, Utopia Boutique, Walmart, The Westin Galleria Dallas, BJ and Jason Weintraub, Zoes

# ANNUAL REPORT

## 2012-2013 BOARD OF DIRECTORS

Heather Duncan, President  
Liz Brolick, President-elect  
Jenny Lizama, Treasurer  
BJ Weintraub, Recording Secretary  
Courtney Wilson, Corresponding Secretary  
Toni Moseley, Communications Council Vice President  
Jennifer Roberson, Community Program Vice President  
Carissa Cooper, Community Council Vice President  
Ashley Farthing, Financial Council Vice President  
Ashleigh Boedeker, Membership Council Vice President  
Paula Settoon, Strategic Planning Chair  
Mary Anne Thoman, Nominating Chair  
Rita Burke, Treasurer-elect  
Janna Roberson, Sustaining Board Advisor

## 2012-2013 COMMUNITY ADVISORY BOARD

Colleen Ayers-Griffin, Community Service Council  
Victoria Bartlett, City of Tulsa Appointee  
Ken Busby, Arts & Humanities Council of Tulsa  
Michelle Choquette, Community Action Project  
Doug DeJarnette, F&M Bank & Trust  
Debi Friggel, QuikTrip Corporation  
Karen Larsen, KJRH TV  
Mike Neal, Tulsa Metro Chamber of Commerce  
Brian Paschal, Tulsa Metro Chamber of Commerce – TYPros  
Mary Quinn Cooper, McAfee and Taft  
Kathy Siebold, OU-Tulsa Schusterman Center  
Sarah Stephens, Persimmon Group

## Endowment Funds Management Board 2012-2013

Margaret Johnson, Chair  
Deidra Kirtley

Laurie Brumbaugh  
Michelle Riddell

Heather Duncan  
Liz Brolick

Jenny Lizama  
Sharmien Watkins

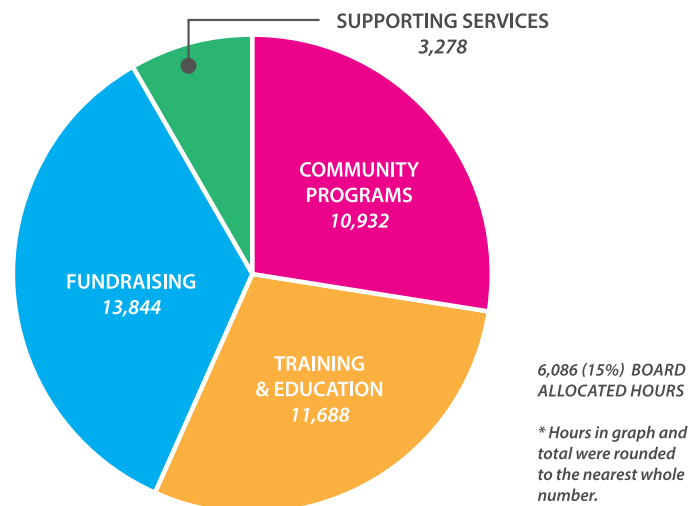
## LIST OF 2012-2013 COMMUNITY PROJECTS

**HARVEST MARKET/KIDS IN THE KITCHEN**, a not-for-profit grocery store located in West Tulsa in the Eugene Field Elementary neighborhood. As an extension of the Association of Junior Leagues International (AJLI)'s national healthy eating initiative, Kids in the Kitchen, JLT members coordinate with community members to offer cooking classes that focus on nutritious, budget-friendly meal options. The classes provide the opportunity for attendees to strengthen community ties while learning and sharing information.

**THE HENRY ZARROW CENTER FOR ART & EDUCATION** was a partnership between JLT, the University of Tulsa and Gilcrease Museum to establish arts education programs for children and their families in a state-of-the-art facility in the Brady District of downtown Tulsa. The facility is adjacent to Philbrook Downtown and the Art and the Arts & Humanities Council of Tulsa, and houses a rotating art exhibit, wine bar, and classroom space for both children and families. JLT's efforts addressed arts education programming, volunteer needs, and awareness and outreach efforts to capture underserved communities in the Tulsa area.

**IMPACT** enables JLT to serve multiple Tulsa area organizations each year and is a great placement for members who want a community-based focus. Organizations apply for assistance and "Done in a Day" projects are chosen, planned, and implemented by the IMPACT Committee. IMPACT projects in the past have included members helping organizations beautify their grounds, staff their client events, teach classes for their clients, and organize materials and supplies.

**THE LAURA DESTER COMMITTEE** provides volunteer support



**FY13 VOLUNTEER HOUR TOTAL: 39,742**

to the Laura Dester Children's Shelter, an emergency shelter for children removed from their homes because of abuse or neglect. The Shelter serves children ages newborn to 18 years, providing a safe, nurturing environment until the child can return home or a permanent placement can be found. Committee members plan and implement "Done in a Day" projects, holiday parties and activities with direction from the shelter staff. More so, members provide interaction, support, love and a much needed distraction for children who desperately need it.

**JLT SCHOLARSHIP** awarded three \$1,500 Albert Cook Scholarships to women in transition living in our community and two \$1,500 Junior League Founders' Scholarships to high school seniors who demonstrated a commitment to voluntarism.

# ANNUAL REPORT

## MESSAGE FROM HEATHER DUNCAN, 2012-2013 JLT PRESIDENT

**S**imply amazing. As I look back on the 2012 – 13 year, I am so proud and so grateful. Goals were set and met. Strategies were formed, and actions were put in place to ensure that our League continues to thrive and support our amazing members and those we serve.

There were many individuals, families, organizations, and businesses responsible for last year's success. The seeds that were planted, and the successes that were celebrated would not be possible without the efforts of so many. Thank you to each and every provisional, active and sustainer. Welcome to our talented and passionate transfers and newest members. Thank you to my generous and talented Board of Directors, our brilliant and kind Community Advisory Board, my courageous and kind Committee Chairs, and all of our fantastic members. Last year was simply amazing.

A very special thank you to Mrs. Frances Chandler. You are so special to us, and I will never forget the amazing memory of celebrating you with your family and friends at *Pearls and Prohibition*.

Last year was marked by the celebration and recognition of mentorship and the magical effects it has on our League and our members. I learned so much from each of you, and I had so much fun doing it.

Happy 90th Birthday, JLT! Cheers to many, many more.



courtesy of Leslie Hoyt | [www.lesliehoyt.com](http://www.lesliehoyt.com)

*Loyally,*  
**HEATHER DUNCAN**  
*2012-13 President*

# ANNUAL REPORT

## 2012-2013 TULSA JUNIOR LEAGUE SPONSORS AND DONORS

Lisa and Glenn Albers  
Alliance Resource Partners, LP  
Apache Corporation  
Part Time Pros  
Bank of Oklahoma  
Barrow and Grimm, P.C.  
Victoria and Dewey F. Bartlett, Jr.  
Abbie and Josh Black  
BMW of Tulsa  
Ashleigh and Dan Boedecker  
Kristin Bradshaw  
Mary Brett  
Liz and Peter Brolick  
Laurie Brumbaugh  
Natalie Brundred  
Rita and Taylor Burke  
Capital Advisors, Inc.  
The Family of Frances Herndon  
Chandler  
Michelle Choquette  
Cimarron Engineering, Inc.  
Citizens Security Bank  
Anne Cleveland  
Robin Crouch  
Sue Curry  
Cyntergy AEC  
Leslie Dalton  
Karen Davis  
Denmar Services, Inc.  
Nan Dickerson  
Beverly Dieterlen  
Kay Dixon  
Virginia DonCarlos  
Bernadette Dornblaser  
Connie Doverspike  
Heather and Jason Duncan  
Elizabeth Dunkin  
Stephanie and Russ Eckman  
Endico, Inc.  
Betsy and Tim Endicott  
Jessica and Jon Engelbrecht  
Lucia and Tim Epps  
F&M Bank Trust Co.  
Charlene Fabian  
Farthing Events  
Carolyn Fielder Nierenberg  
First Oklahoma Bank  
Katherine Frame  
Lacie Franklin  
Sarah Franzen  
Karen Fraser  
Leslie Frazier  
Debi Friggel  
Erin Fultz  
Marge Gaberino  
Kelli and Mark Gebbia  
The Gelvin Foundation  
Sarah Jane and Matthew Gillett  
Christy Gilliam

Shari Graham  
Grand Bank  
Lindsay and Blake Gray  
Graybar Electric  
Jane Grimshaw  
The Hamlet  
Katherine and Henry Haskell  
Michelle Hassell  
Shirley Hawkins  
Heatherington & Fields Certified  
Public Accountants  
Peggy Helmerich  
Bonnie and Frank Henke  
Jane Herndon  
Margaret Holdridge  
Shellie Holland-Handy  
Kara and Clint Howard  
Kristen and Kevin Howell  
Deborah Hughes  
Judy Ingraham  
Irby Electrical Distributor  
Jarboe Sales Company  
JD Young  
Joan Stauffer  
Dru Johnson  
Margaret Johnson  
Amy Kantor  
Kelly Karlovich  
Kashi  
Marion Kelsey  
Susan and Richard Kenny  
Margaret King  
Deidra Kirtley  
Kristen Howell  
Jane and Tim Lafalier  
Ann and Gary LaGere  
Karen Larsen  
Karen Lee  
Sarah Leedy  
Susan Lentz  
Mary Anne Lewis  
Logos Staffing  
Ashlee Lowry  
Kathryn and Robert Martin  
Shannon Martin  
Whitney and Blake Mathews  
McGraw Realtors  
Nancy and Peter Meinig  
Marge Meyer  
Mid-Con Energy Partners, LP  
MidFirst Bank  
Tishey Miller  
Jean and David Millwee  
Barbara Moschovidis  
Eutonia Moseley  
Mary Beth Nesser  
Nicole Randolph  
Mary Niedermeyer  
Carolyn Nierenberg

Patriot Bank  
Lynn Peacher  
PennWell Corporation  
Katie Pham and Hef Matthews  
Beth Pielsticker  
Denise Piland  
Abigail and Jerry Prescott  
Nicole and Jason Pugh  
RCB Bank  
Sarah Rehm  
Sam J. and Nona M. Rhoades  
Foundation  
Janna and Steven Roberson  
Jennifer Roberson  
Margaret Rosene Robinson  
Neen Ross  
Pam Rosser  
Rupe Building Company  
Anna C Saah  
Samson Resources  
Kay Schermerhorn  
Schneider Electric  
Ashley Schubert  
Paula Settoon  
Nancy Sevenoaks  
Kathy Shaffer  
Brandy and Trent Shores  
SM Energy  
Spearman Ranch  
Spray Equipment of Oklahoma  
Stauffer & Nathan  
Barbara and Jim Sturdivant  
Betty and Kelly Swindle  
Mary Anne Thoman  
Courtne and John Tidwell  
Beverly Torr  
Hogan Assessments  
Triple E Farms, Inc.  
Tulsa's Young Professionals  
Diane VanValkenburgh  
Tarynn Venable  
Alison and Eric Wade  
Thomas E. Warren  
BJ and Jason Weintraub  
Weslock  
Barbara West  
West Construction  
Sarah Williams  
Williams  
Courtney and Rich Wilson  
Treva Wiruth  
The Wolek Group - Keller Williams  
WPX Energy, Inc  
Leslie Yardy  
Karen Young

# ANNUAL REPORT

## THE FINANCIAL POSITION & ACCOMPLISHMENTS



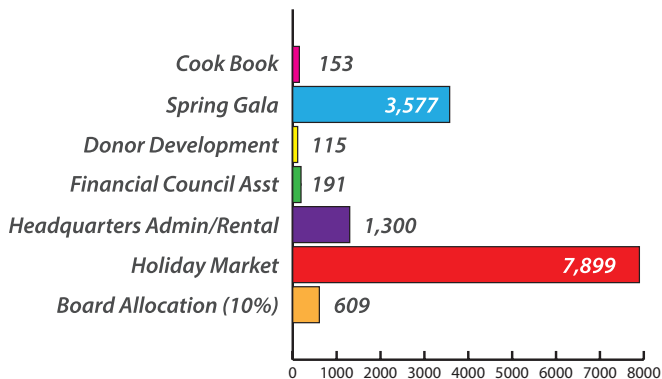
### THE FINANCIAL POSITION: JUNE 1, 2012-MAY 31, 2013

Total Current Assets.....	\$505,838
Investments.....	\$573,597
Property & Equipment.....	\$1,682,591
(less Accumulated depreciation of \$795,664: balance \$886,927)	
Tulsa Community Foundation Funds.....	\$47,812

**Total Fundraising Amount.....\$181,643**  
(73% increase from the previous fiscal year)

### HIGHLIGHT: FUNDRAISING HOURS

Summary of fundraising hours during the past fiscal year.  
Totals are rounded to the nearest whole number.



### PORTFOLIO GROWTH

#### Junior League of Tulsa, Inc. Endowment

February 18, 2014 Total Market Value: \$674,462



### MEMBERSHIP TOTAL AT MAY 31, 2012

Placed Active Membership.....	198
Provisional Membership.....	52
<b>TOTAL.....</b>	<b>250</b>

### MEMBERSHIP TOTAL AT MAY 31, 2013

Placed Active Membership.....	184
Provisional Membership.....	80
<b>TOTAL.....</b>	<b>264</b>

### 2012-2013 ACCOMPLISHMENTS

- Welcomed over 100 Provisionals to Active membership in May 2013
- Re-engaged over 40 members through the ReMember campaign
- Held inaugural Mentorship Luncheon in March 2013
- Achieved all fundraising goals for major JLT events
- Initiated Facility Corporation Board to manage headquarters on a more consistent basis
- Recommended updates to Bylaws, Policies, and Procedures
- Initiated long range plan for digitizing and maintaining JLT archives

# a HISTORY of AJLI & JLT

by Amanda Alvarez



**1921**

*The Leagues came together to form The Association of Junior Leagues of America*

**1923**

*The Junior League of Tulsa was formed with just 13 members. This small group of women established the Convalescent Home for Crippled children, which later became Children's Medical Center*

**1940s**

*Recognizing their potential for legislative reform, Leagues began to establish the first Public Affairs Committees, actively using a collective voice to put forth meaningful initiatives that improved lives in their communities.*

**1940s**

*Junior League programs included war bond drives and a specialized medical clinic at St. John Hospital.*

**1950s & 1960s**

*JLT organized the Children's Museum at Philbrook; established preschool deaf therapy and vision screening, and diagnostic nursery at the Children's Medical Center.*

**1979**

*In an effort to embrace diversity and inclusion in the post-Civil Rights era, the Leagues adopted a Reaching Out Statement that explicitly welcomes women of all races, religions, and national origins.*

**1970s**

*JLT established Leadership Tulsa, the Natural History Museum at the Tulsa Zoo, and the Oxley Nature Center.*

**1988**

*Title change to "The Association of Junior Leagues, International, Inc."*

**1980s, 90s & 2000s**

*JLT was involved with projects including a domestic violence program (later known as Domestic Violence Intervention Services), Ronald McDonald House, Frances E. Willard Home for Girls, the Harmon Science Center, and the development of Child Abuse Network (CAN).*

**2006**

*Leagues adopted the Junior Leagues' Kids in the Kitchen initiative to combat the epidemic of childhood obesity in four countries*

**2014**

*The Junior League is engaged with continued transformative efforts.*

**2014**

*There are currently over 800 active and sustaining members of the Junior League of Tulsa that all work towards the common goal of improving the community.*

# INCOMING BOARD MEMBERS

by Alison Wade, 2013-2014 President Elect

On December 8, 2013, the Nominating Committee revealed the 2014-15 JLT Board of Directors during the General Membership Meeting at Sky 41.

**Alison Wade** will serve as President during her 15th active year in League. Alison is an attorney and adjunct college professor. Alison has previous Board experience as the 2009-2010 Membership Council Vice President and as the 2011-2012 Nominating Chair. Additionally, Alison has chaired several League committees including Membership Events, IMPACT, and CPDC.

**Carissa Cooper** was selected to serve as President-Elect. She is currently the Communications Council Vice President for the 2013-2014 Board of Directors. She also served on the 2012-2013 Board as Community Council Vice President. During her League career, she has held several leadership positions including Child Abuse Network Committee Chair and Zarrow Center for Arts & Education Committee Chair.

**Marti Levinson** will serve as Recording Secretary. Currently, she is the Membership Development Chair. During the 2012-2013 League year, she was recognized as the Volunteer of the Year for her role as Recruitment Chair. Marti's past placements include Global Gardens, Saint Francis Resource Library, and the Provisional Committee.

**Nicole Randolph** will serve as Treasurer. Nicole has held numerous leadership positions since joining the League in 2009. She has been placed on Global Gardens, Harvest Market, Technology, and Strategic Planning & Research. She is also a previous recipient of the Volunteer of the Year Award.

**LeAnne Eakin** was selected as the Treasurer-Elect. LeAnne recently began a new job at Hogan Taylor, LLP.

She has previously been the Holiday Market Treasurer and the Placement Chair. Leanne is currently serving as the Financial Evaluation & Research (FER) Chair.

**Molly Aspan** was selected as Communications Council Vice President. She is currently serving as the Training & Education Chair. She is employed as an attorney with Hall Estill Law Firm. Past League placements for Molly include the Training & Education Committee and serving as Chair of the Impact Committee.

**Cyndi Kernan** will serve as Strategic Planning Chair. She is a current member of the Board of Directors occupying the role of Community Program Vice President. During her time in the League, she has placed on Technology and Laura Dester IMPACT, served as a Provisional Liaison, and chaired the Donor Advancement Committee.

**Courtney Wilson** will serve as Financial Council Vice President. Courtney is currently the Spring Gala Co-Chair. She has previously served on the Board of Directors as the Corresponding Secretary in 2012-2013. She is also a previous Chair of the Membership Matters Committee.

**Rita Burke** was selected as the Community Program Vice President. Rita is a local sales manager for KTUL Channel 8 and is currently the Treasurer for the League. She has previous experience on the Board of Directors as the Membership Council Vice President in 2011-2012. Her past League placements include Holiday Market Chair and Treasurer-Elect.

**Shellie Rea** will serve as the Nominating Chair. After joining the League in 2007, she has served on a variety of committees including Technology, Holiday Market, and Provisional. Additionally, she has been the Technology Vice Chair

and IMPACT Chair. This year she assisted in the slating of the 2014-2015 Board as a member of the Nominating Committee.

**Tara Proctor** will share responsibility for the 2014-15 Membership Council. Tara, who is employed as the Office Manager for Frasier, Frasier & Hickman Law Firm, will be the Membership Council Vice President. Tara has previously chaired the Hospitality Committee and served on the Holiday Market Committee.

**BJ Weintraub** will share responsibility for the 2014-15 Membership Council. BJ, who works as a sales manager for Varsity Spirit Fashion, will be the Membership Program Vice President. After joining the League in 2007, BJ served as the 2012-2013 Board Recording Secretary. She is currently co-chairing the Spring Gala.

**Sarah Rehm** was selected as the Community Council Vice President. She works at Bank of Oklahoma. This year, Sarah was placed as the Communications Council Assistant. During her tenure in League, she has been a member of the Strategic Planning & Research Committee, the American Girl Committee, the Saint Francis Resource Library Committee, and chaired the Zarrow Center for Arts & Education in 2012-2013.

**Leslie Frazier** will serve as the Sustaining Advisor. Leslie is employed as a principal with Coweta Public Schools. As an active member, she served in all four League Councils. Previous placements for Leslie include Financial Council Vice President, Communications Council Vice President, Provisional Co-Chair, and Community Council Liaison.



# COMMUNITY ADVISORY BOARD

## *Spotlight on Victoria A. Bartlett*

by Ann Boyd



**How many years have you lived in Tulsa?:** *"I was born, raised, and graduated from high school in Newton, Kansas. I moved to Tulsa in 1975 after completing my undergraduate degree from the University of Houston to attend law school at the University of Tulsa. I have lived in Tulsa for 49 years."*

**What is one word that best describes Tulsa?:** *"Bustling"*

**What are three words to describe yourself?:** *"Persistent, energetic and devoted."*

**What other community work have you been involved in?:** *"For the past 11 years, I have served on the Board of Directors for the Tulsa Arts & Humanities Council; my greatest passion is promoting arts education for children. I also serve on the Board of Directors for the American Heart Association to promote a healthy and fit community. In 2010, I was*

*Chair of the U.S. Census Campaign, Co-Chair of the Tulsa School Bond Election Campaign, Honorary Chair of the Denim and Diamonds benefitting RSVP, Co-Chair of the Jazz Hall of Fame Induction Gala, and Honorary Chair of the Tulsa Food Bank Membership Luncheon. Both in 2011 and 2012, I was the*

*celebrity runner for the Hispanic Heritage 5K Run. In 2012, I was also Honorary Chair for Tulsa Global Alliance Kid's World. In 2013, I served as Honorary Chair of the Robert Morton Gala benefitting Morton Health Services. In early 2014, I was Honorary Co-Chair for the Metropolitan Tulsa Urban League Annual Dinner. Since 2009, I have continuously served on the Obesity Subcommittee for the Oklahoma Health Department, participated in the Oklahoma Health Department's Annual Retreat, the Tulsa Food Security Council, the Tulsa Bicycle Advisory Board, the Tulsa County Wellness Partnership, the Circle of Red for Women's Health with the American Heart Association, and as a spokesperson for the Tulsa County Mentoring Coalition."*

**What does Junior League offer to Tulsa?:** *"Junior League offers the important role of leadership training and hands-on activities to improve the lives of women and children*

*in the Tulsa community through volunteer service and charitable endeavors."*

**What are your hobbies?:** *"Volunteer work, cooking, reading, jogging, boating, gardening, reading to children, public speaking, and entertaining."*

**Who makes up your family, pets included?:** *"My husband, Mayor Dewey F. Bartlett, Jr.; our oldest daughter Andrea Brown, her husband Brad, and their daughter Tennyson; our son Dewey F. Bartlett, III; our youngest daughter Ann Bennett, her husband J.P. Bennett, and their son Bay; our tuxedo cat Spencer."*

**How did you get involved in the Junior League Community Advisory Board?:** *"I was selected by my husband as the mayoral appointment to the Board."*

**What is the best advice you can give to someone looking to volunteer in their community?:** *"Follow your passion. There are numerous volunteer opportunities in every community that require different responsibilities, talents, time, financial commitments, and activities. My advice is to select an organization that suits your personal interests, skills, energy, and devotion and give it your full attention to help make your community the very best place to live."*

# Hello, Sustainers!



service and support in the community, we are passing our strengths on to others.

During the last two years, the Sustainer Engagement Committee has accomplished the following:

We continued to thrive in our existing three Sustainer clubs and established a new experience: "Catch Up Over Cocktails." We increased efforts to include younger Sustainers and worked with their time and interests.

We increased positive and effective communication for Sustainers to build on relationships by confirming more email addresses.

We launched the [sustainers@jltulsa.org](mailto:sustainers@jltulsa.org) e-mail address to communicate targeted Sustainer information more effectively.

We maximized impact for the 'public' and 'member only' JLT website pages, keeping information current and establishing an online payment method for events/parties.

We collaborated with Actives on their "Re-Member" campaign to increase the number of dues-paying Sustainers.

We offered opportunities for Sustainers to have involvement in some of the Impact projects.

We joined the JLT Membership Council and attended monthly meetings to collaborate more with Actives and Provisionals.

We organized five events and parties between 2012-2014 with a new structure of combining the Holiday Party into the December Restaurant Club.

We established an annual award for a Sustainer that has shown outstanding achievements and support for the Sustainer membership.

Looking at this list, I am proud of our accomplishments and hope you are pleased with our work. I, also, hope each of our Sustaining Members will continue to support the JLT with their time, talents, gifts, and services. Instead of saying "I've been wanting to come to...", we should all be saying "I'm so glad I went to..."

This will be my last *gusher* letter to the Sustainers before I pass the torch to Annabel Jones, your next Sustainer Engagement Committee Chair. I want to thank my committee for their enthusiasm and help these past two years. We sure did have fun at our meetings while we planned the events, parties, and activities for the Sustaining Members!

*Sincerely;*

*Mary Alice Ahlgren*

Mary Alice Ahlgren

*Sustainer Engagement Committee Chair*

**T**he Association of Junior Leagues International (AJLI) has a Certificate of Incorporation & By-laws 2013 which mentions Sustaining Members just a few times. The first mention explains the Categories of Membership. Sustaining is defined as:

"Sustaining members are those members who have fulfilled the Active membership requirements as defined by their individual Junior Leagues and who continue to support their Leagues and communities."

The part of the declaration that I want to address in this letter is the last few words because I believe that it is incredibly important that we "continue to support [our] Leagues and communities" as Sustainers. The ideology that comes to mind, which some of you may be familiar with, is to reflect support with our time, talent, gifts, and services. Using all of these to support our Leagues is exactly what AJLI is looking for. As Actives, we had opportunities to learn leadership and voluntarism skills, and now as Sustainers we can use those to help others in our Tulsa community. In past letters, I have mentioned a few Sustainers who are supporting JLT and Tulsa in these four ways; I wish I had the space to highlight each and every one of you. Among other things, we are advocates of the Junior League of Tulsa, and by continuing our

# SUSTAINER UPDATE

**JLT WEBSITE:** It's easy to access the Member Login section of the JLT website ([www.jltulsa.org](http://www.jltulsa.org)) to obtain Sustainer member information (under Membership Matters tab), JLT Member directory, pay for JLT events/parties and more! Just enter your Username (Lastnamefirstname) and you will be directed to send an email to set up a password. You will create your own password and then be set to enter Member Login. There, you can check the box to "remember me next time I logon" so you don't have to remember your password each time!



## ACTIVITIES

## INVOLVED?

### THE BOOK CLUB

May: *The Remains of the Day* by Kazuo Ishiguro

June: *The Book Thief* by Markus Zusak

July: *Under the Wide and Starry Sky* by Nancy Horan

August: *The Life and Times of the Thunderbolt Kid* by Bill Bryson

*Want to get involved in Sustainer Activities?*

Book Club  
Third Tuesday each month  
Annabel Jones, (918) 629-7522  
[ajones@samson.com](mailto:ajones@samson.com)

Lunch Club  
First Wednesday each month  
Robyn Cannon, (918) 298-7753  
[rlcannon@cox.net](mailto:rlcannon@cox.net)

Dinner Club  
Second Monday each month  
Ann Foster, (918) 694-6118  
[ann.foster@hilti.com](mailto:ann.foster@hilti.com)

Catch Up Over Cocktails Club  
Leslie Frazier, (918) 855-5044  
[Leslie.Frazier@cowetaps.org](mailto:Leslie.Frazier@cowetaps.org)



### LUNCH CLUB

May: Upper Crust Pizza (91st/Yale)

June: Juniper (3rd St., Downtown)

July: Rusty Crane (N. Detroit, Brady District)

August: Leon's (Peoria, Brookside)



### RESTURANT CLUB

May: Laffa (N. Main, Brady District)

June: Ridge Grill (101st/S. Mingo)

July: Tavolo (S. Boston, Downtown)

August: Upper Crust Pizza (91st/Yale)

### CATCH UP OVER COCKTAILS

MAY: R Bar & Grill (Brookside)

JULY: McNellie's (1st St., Downtown)



### 2013-2014 SUSTAINER ENGAGEMENT COMMITTEE

Laurie Brumbaugh  
Julie Buxton  
Robyn Cannon  
Sue Curry  
Earlene Gathright  
Ann Foster  
Dru Johnson  
Annabel Jones  
Deborah Kurin  
Denise Piland  
Pam Rosser

# OUT *and* ABOUT



# OUT *and* ABOUT



the sarah image photography



PROUD  
*Sponsor*  
 OF THE  
*Junior League*  
 OF  
*Tulsa's*  
*Spring Gala*



**Central**  
 NATIONAL BANK  
Since 1923

4880 South Lewis Ave Ste 101 • Tulsa, OK 74105  
 (918) 508-2000 • Cnb-ok.com  
 Member FDIC



*Leslie Hoyt.com*

Heirloom Children's Portraits  
 918-200-9436

*Luxe*  
 FURNITURE & DESIGN



9922 S. Riverside Parkway | 918.459.8950  
 www.LuxeTulsa.com



## Strength to Build a Brighter Future.

WPX is proud to partner with Junior League of Tulsa to provide art classes and mentoring to children at Hawthorne Elementary through the MyMuseumMobile program. Thanks for helping to paint a picture for a brighter tomorrow.

855.979.2012 | [www.wpxenergy.com](http://www.wpxenergy.com)



© 2014 WPX Energy

# Nielsens

Recycled Glass Giftware  
Combines great color and style for entertaining  
Wonderful selections!!



81st & S. Lewis Ave. & 3515 S. Peoria - Brookside • Tulsa, Oklahoma  
918-298-9700 (800) 665-1233  
www.NielsensGifts.com • UPS • Free Gift Wrap & Delivery

# ReMember...

Thank you for ReMembering the Junior League of Tulsa by renewing your dues or making a gift.

Follow the steps below and simply return this form in the reply envelope included within gusher.

## Step 1: Renew your membership or make a gift: *Dues for the coming year are as follows:*

Active Member Dues.....	\$175
Sustainer Dues.....	\$100
Sustainer Dues – over 65 years of age.....	\$75
Sustainer Dues – over 80 years of age.....	\$0

*\*If you would like to make a gift to the JLT endowment, make note of this generous gesture here:*

I would like to donate \$\_\_\_\_\_ to the JLT Endowment.

I would like to make this gift in honor or memory of:

\_\_\_\_\_

## Step 2: Stay in touch

Stay in touch with JLT and provide updated contact information, including adding an email address. (While email correspondence might not always be the easiest way to stay informed, it is the least expensive and most timely.)

\_\_\_\_\_ *Check here if your address is incorrect on the gusher.*

If incorrect, advise us of changes here:

\_\_\_\_\_

\_\_\_\_\_

\_\_\_\_\_ *Check here if you do not want to receive updates from JLT via email.*

Preferred email address:

\_\_\_\_\_

Please share your contact number for the JLT directory:

\_\_\_\_\_

## Step 3: Stay connected

\_\_\_\_\_ Check here if you are interested in getting involved with a committee or task force. A member will contact you for more information and your areas of interest.

*Thank your for supporting the Junior League of Tulsa.*



## ONE GIFT CARD. 1,000 USES.

Say Happy Holidays, I Love You, Great Job,  
Congratulations, I've Missed You, Welcome  
Back, You're the Best...with the gift of fondue.



Reservations Recommended • MELTINGPOT.COM  
(918) 299-8000 • RIVERWALK CROSSING



# DO YOU HAVE AN UPCOMING EVENT THIS SPRING?

*The Junior League is the place to have it!*

HOST YOUR NEXT CELEBRATION OR MEETING AT JLT HEADQUARTERS

- Conveniently located near 36th Street and Yale Avenue
- Five separate meeting rooms can accommodate all types of corporate, non-profit or special events
- Rooms available for groups of 10 to 250 people
- Fully equipped kitchen with ovens and refrigerator
- Free parking all around building
- Handicapped accessible
- LCD and overhead projectors available for use
- On-site equipment, tables and chairs included in rental rate
- Special discounted rates for non-profit organizations

**WWW.JLTULSA.ORG | 918.663.6100**

Please visit our website for additional information and rates  
or email us at [office@jltulsa.org](mailto:office@jltulsa.org)

# GOT SPRING FEVER?

Sign up for the FREE Tulsa Weekender and you'll always "be in the know" about what's going on in Tulsa! Compiled by our expert editors, the Tulsa Weekender features the best events in the Tulsa area in a variety of categories such as Food & Drink, Sports & Rec, Shopping, Music, Movies, Special Events and much more!

Just visit

**TulsaPeople.com**

to join our email list and  
receive the Tulsa Weekender!



## 2<sup>nd</sup> Annual OLG: Day In the Garden

Benefitting the future  
Children's Discovery Garden

*Saturday, May 10,*  
4-7 p.m.

Live Music, Food, Games, Pony Rides, Garden Railroad and more

Tickets: \$50 per person or \$75 for two. Children free with a paid adult.  
(Members \$25 for one/\$40 for two)

918-289-0330

TULSABOTANIC.ORG